

COMPLETE PROTECTION
WITH SUPERIOR DESIGN INSIDE & OUT
HIKVISION EXPLOSION-PROOF CAMERAS

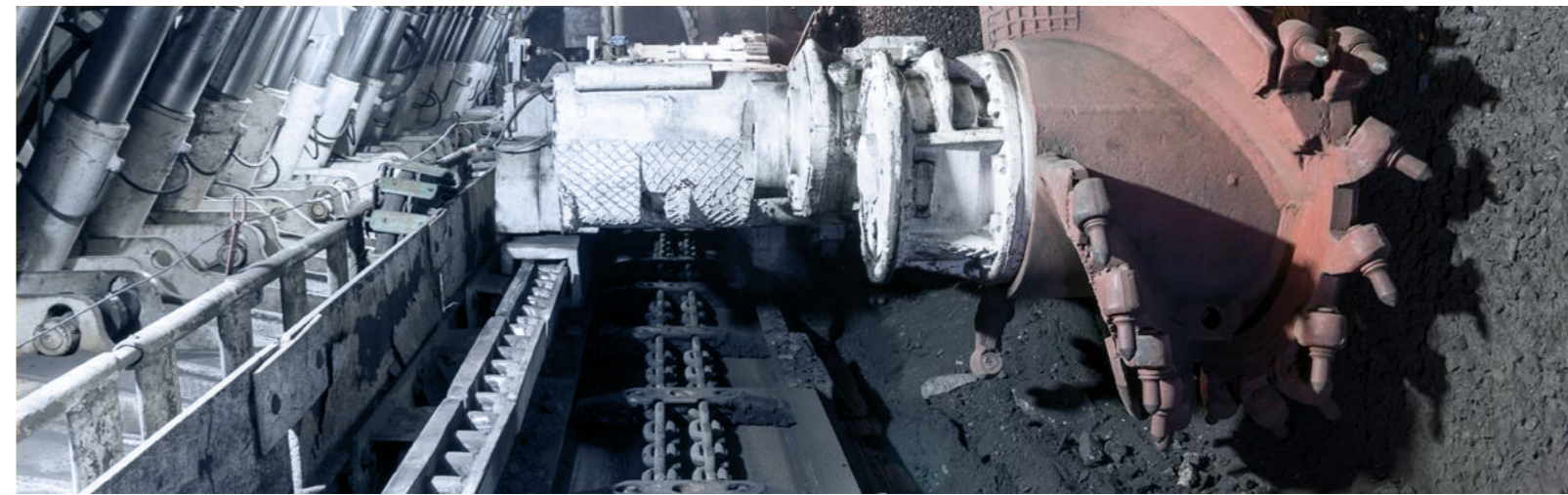


HIKVISION

Headquarters
No.555 Qianmo Road, Binjiang District,
Hangzhou 310051, China
T +86-571-8807-5998
Business: overseasbusiness@hikvision.com
Technical Support: support@hikvision.com

Hikvision USA T +1-909-895-0400 sales.usa@hikvision.com	Hikvision Europe T +31-23-5542770 sales.eu@hikvision.com	Hikvision UK & Ireland T +01628-902140 sales.uk@hikvision.com	Hikvision UAE T +971-4-4432090 salesme@hikvision.com	Hikvision Russia T +7-495-669-67-99 saleru@hikvision.com	Hikvision Australia T +61-2-8599-4233 salesau@hikvision.com
Hikvision South Africa Tel: +27 (10) 0351172 sale.africa@hikvision.com	Hikvision Singapore T +65-6684-4718 sg@hikvision.com	Hikvision Korea T +82-(0)31-731-8817 sales.korea@hikvision.com	Hikvision India T +91-22-28469900 sales@pramahikvision.com	Hikvision Brazil T +55 11 3318-0050 Latam.support@hikvision.com	Hikvision France T +33(0)1-85-330-450 info.fr@hikvision.com
Hikvision Poland T +48-22-460-01-50 info.pl@hikvision.com	Hikvision Canada T +1-866-200-6690 sales.canada@hikvision.com	Hikvision Turkey T +90 (216)521 7070- 7074 sales.tr@hikvision.com	Hikvision Kazakhstan T +7-727-9730667 nikia.panfilov@hikvision.ru	Hikvision Tashkent T +99-87-1238-9438 uzb@hikvision.ru	Hikvision Indonesia T +62-21-2933759 Sales.Indonesia@hikvision.com
Hikvision Malaysia T +601-7652-2413 sales.my@hikvision.com	Hikvision Vietnam T +84-974270888 sales.vt@hikvision.com	Hikvision Hong Kong T +34-91-737-16-55 info.hk@hikvision.com	Hikvision Czech Republic T +420 29 6182640 info.cz@hikvision.com	Hikvision Colombia sales.colombia@hikvision.com	Hikvision Romania marketing.ro@hikvision.com
Hikvision Israel T +972-79-5555590 sales.israel@hikvision.com	Hikvision Italy T +39-0438-6902 info.it@hikvision.com	Hikvision Spain T +34-91-737-16-55 info.es@hikvision.com	Hikvision Thailand T +662-275-9949 sales.thailand@hikvision.com	Hikvision Azerbaijan T +994 50 369 81 57	

Follow us on social media to get the latest product and solution information



COMPLETE PROTECTION
WITH SUPERIOR DESIGN INSIDE & OUT
HIKVISION EXPLOSION-PROOF CAMERAS



HOW TO PREVENT EXPLOSIONS

The Three Elements of Combustion

Explosive substances and combustion-supporting gases are the external factors that explosion-proof product manufacturers can hardly control. However, manufacturers can control the internal factor – the combustion source. And this can be achieved through the structural design and material selection of the product.



Explosive substances
(Combustible gases & solids)



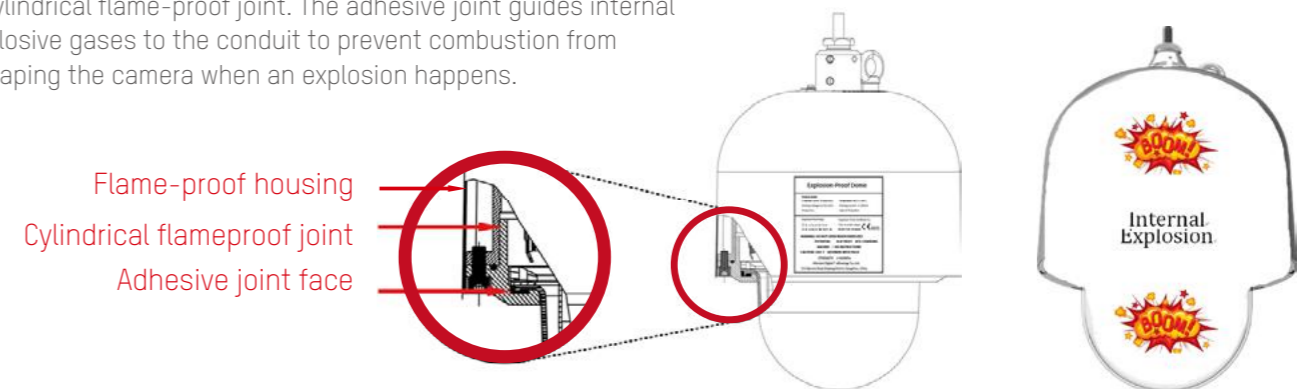
Combustion-supporting gases
(Oxygen)



Combustion source
(Controllable factor: Sparks or flames)

Explosion-Proof Structure

Hikvision explosion-proof cameras use flame-proof housing and a cylindrical flame-proof joint. The adhesive joint guides internal explosive gases to the conduit to prevent combustion from escaping the camera when an explosion happens.



BACKGROUND

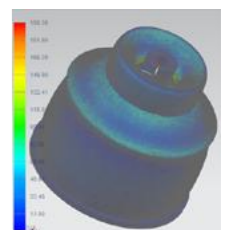
With flammable and combustible materials such as gas, oil and powders, places like coal mines, gas stations and chemical plants are prone to explosion risks. In these hazardous places, the design and use of all machinery and electronic equipment must meet the explosive atmospheres regulations to make sure they will not cause explosion.

When it comes to video security in explosion-prone areas, specially-designed explosion-proof cameras is the solution.



Explosion-Proof Materials

Hikvision explosion-proof cameras are covered by 304/316L stainless steel, and the thickness of the cover is more than 3.5 mm. Using ANSYS for finite element force analysis, the structure can withstand a maximum pressure of 198.36 MPa. No broken or permanent deformation results after the simulated explosion.



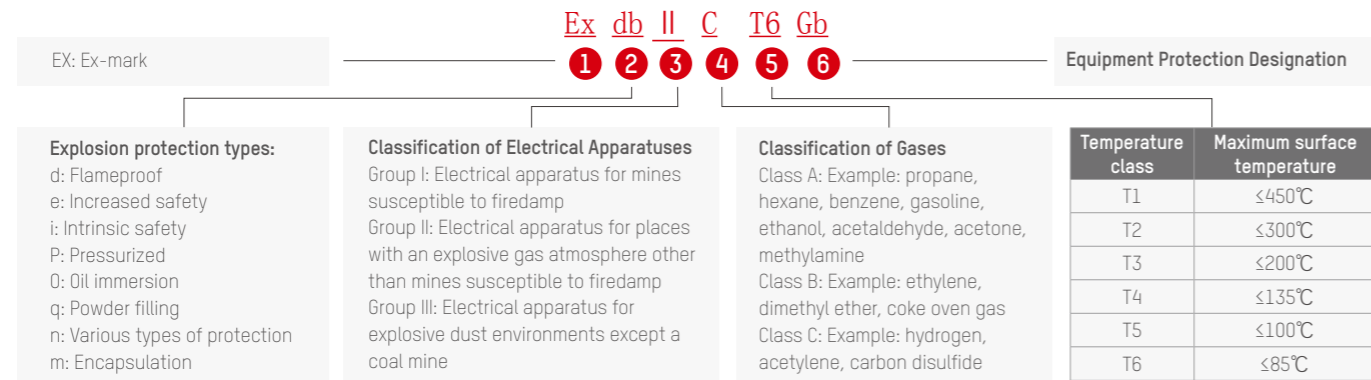
Hikvision explosion-proof cameras are customized network cameras inside heavy-duty housings. Certified for explosion-prone applications, they offer high-quality video monitoring and unparalleled smart functions to detect anomalies and protect your staff and properties in the hazardous environments.

CERTIFICATION

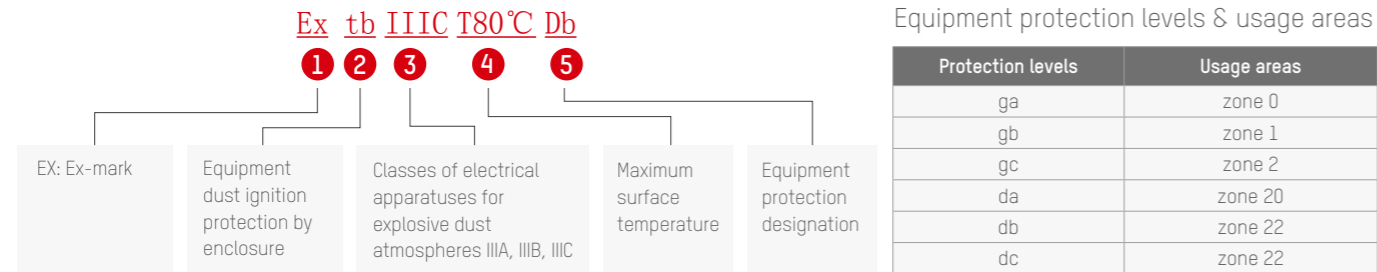
IECEX Authentication

The IECEx authentication includes 'Gas Explosion-proof' and 'Dust Explosion-proof' certifications.

Gas explosion-proof designations:



Dust explosion-proof designations:



All Hikvision explosion-proof products have acquired the IECEx and ATEX certifications.

IECEX Authentication	ATEX Authentication	Mobile Authentication (available for mobile models)
<ul style="list-style-type: none"> Ex db IIC T6 Gb Ex tb IIIC T80°C Db 	<ul style="list-style-type: none"> II 2 G Ex db IIC T6 Gb II 2 D Ex tb IIIC T80°C Db 	<ul style="list-style-type: none"> EN50155; EN45545; EMARK Ant-corrosion: C5 (C5-I, C5-M); NEMA 4X CE / FCC / IC / RCM / KC / RoHS / REACH / WEEE / UL (not cUL) / CSA



PRODUCT HIGHLIGHTS

Excellent Protection
TVS 6000 V lightning protection



Complete Certification
IECEX, ATEX, NEMA 4X, C5

Deep Learning
Algorithm embedded



Adequate Firmness
IP68, 316L stainless steel

DarkFighter
Low-light imaging



H.265 / H.265+
Excellent encoding that vastly reduces bandwidth and storage



PRODUCT MATRIX

	Optical zoom	Resolution	IR distance	Others
HIGH	36x / 23x	2 / 4 / 8 MP	150 meters	304/316L stainless steel body available
MEDIUM	23x / 36x / 4x / fixed lens	2 / 4 / 5 MP	200 meters 200 meters 80 meters 150 meters 30 meters	5.9-137.5 mm 5.7-205 mm 2.8-12 and 8-32 mm 2 / 2.8 / 4 / 6 / 8 / 12 / 16 mm lenses available
ENTRY	Fixed lens	2 / 4 MP	30 meters	4 / 6 / 8 mm



DS-2XE6885G0-IZHS
DS-2DF6223-CX(W)
DS-2DY9236I-CWX



DS-2DB4223ICWX
DS-2DB4236ICWX
DS-2XE6422FWD-IZHRS
DS-2XE6442F-IZHRS
DS-2XE6482F-IZHRS
DS-2XE6222F-IS
DS-2XE6242F-IS
DS-2XE6126FWD-HS



DS-2XE6025G0-I(S)(M)
DS-2XE6045G0-I(S)(M)

PRODUCT SHOWCASE



DS-2DF4220-DX
Network Speed Dome

- 1/2.8" progressive scan CMOS
- 2 MP resolution
- 120 dB WDR
- 3D DNR
- 20x optical zoom; focal length: 4.7 to 94 mm
- 316L stainless steel
- Ø 264.2 mm × 184 mm
- Approx. 8 kg (17.64 lb)



DS-2DF6223-CX(W)
Network Speed Dome

- 1/1.8" progressive scan CMOS
- 2 MP resolution
- 23x optical zoom; focal length: 5.9 to 135.7 mm
- Min. illuminations:
Color: 0.005 lux @ (F1.5, AGC ON)
B/W: 0.0005 lux @ (F1.5, AGC ON)
- IR cut filter with auto switch
- 3D DNR, low bitrate, 120 db WDR
- IP68 standard
- Supports three streams simultaneously



DS-2DY9236I-CWX(W/316L)
Positioning System

- 1/1.8" @ 30 fps progressive scan CMOS
- 2 MP resolution
- Min. illumination:
Color: 0.002 lux @ (F1.5, AGC ON)
B/W: 0.0002 lux @ (F1.5, AGC ON)
0 lux with IR
- 36x optical zoom, 16x digital zoom
- 120 dB WDR, HLC, BLC, 3D DNR, Defog, EIS, Regional Exposure, Regional Focus
- Up to 150 m IR distance



DS-2XE682560-IZ(H)(S)
DS-2XE684560-IZ(H)(S)
DS-2XE688560-IZ(H)(S)
EXIR VF Deep-Learning Bullet

- 1/2.8" progressive scan CMOS
- Up to 8 MP high resolution
- 2.8 to 12 mm or 8 to 32 mm lens
- 120 dB WDR
- Face detection
- Hard hat detection
- ATEX, IECEx, NEMA 4X and C5 certified



DS-2XE6422FWD-IZHRS
DS-2XE6442F-IZHRS
DS-2XE6482F-IZHRS
EXIR VF Bullet

- Up to 8 MP high resolution
- 120 dB WDR
- 2.8 to 12 mm or 8 to 32 mm lens
- 6 behavior analyses, 3 anomaly detections, 1 statistics
- IR up to 150 m (8-32 mm) or 80 m (2.8-12 mm)
- IP68 standard
- 316L stainless steel
- Wiper



DS-2DB4223I-CX(WE/316L)
DS-2DB4236I-CWX(WE/316L)
IR ZOOM Bullet

- 1/1.8" progressive scan CMOS
- 2 MP resolution
- Min. illumination:
Color: 0.002 lux @ (F1.5, AGC ON)
B/W: 0.0002 lux @ (F1.5, AGC ON)
0 lux with IR
- 23x optical zoom, 12x digital zoom
- Digital WDR, 3D DNR, HLC, BLC
- 85 to 245 VAC & PoE+ (IEEE 802.3at class 4)
- Up to 200 m IR distance



DS-2XE622560-IZS
DS-2XE624560-IZS
DS-2XE6222F-IS
DS-2XE6242F-IS
Fixed Lens Bullet

- Up to 4 MP resolution
- 4 / 6 / 8 / 12 mm lens or 2.8-12 mm lens
- 120 dB WDR
- 6 behavior analyses, 2 anomaly detections, 1 recognition
- Housing material: 316L stainless steel, optional
- IR range: 30 m
- 100 to 240 VAC / PoE
- IP68



DS-2XE6126FWD-HS
DS-2XE6146FWD-HS
Fixed Lens Dome

- 1/2.8" Progressive Scan CMOS
- Up to 4 MP high resolution
- 2 / 2.8 / 4 / 6 mm lens, optional
- 120 dB WDR
- 316L stainless steel
- Image enhancement: BLC, 3D DNR, HLC, Defog, EIS
- Behavior analyses, exception detections and face detection
- IP68



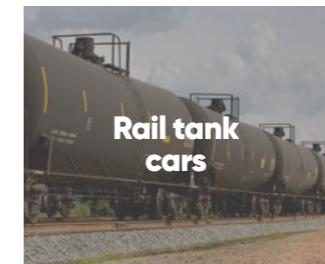
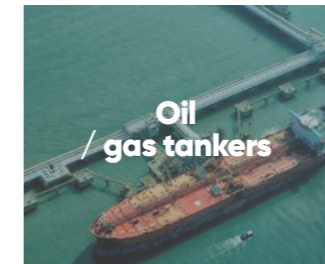
DS-2XE602560-I(S)(M)
DS-2XE604560-I(S)(M)
Fixed Lens Bullet

- 1/2.7" Progressive Scan CMOS
- Up to 4 MP high resolution
- 4 / 6 / 8 mm lens, optional
- 120 dB WDR
- 6 behavior analyses, 2 anomaly detections, 1 recognition
- Housing material: Aluminum
- IR range: 30 m
- 24 VDC / PoE
- IP68 / IK08

APPLICATIONS

Oil & Gas

(From energy extraction to energy consumption)



Dust & Powders

(Manufacturing)



Example – Oil Depots



Area	Recommended Products	Image
Loading area	Explosion-proof bullet, explosion-proof PTZ	
Tank area	Explosion-proof positioning system, explosion-proof bullet	
Monitoring area	Explosion-proof fixed lens dome	
Office area	HD network cameras	